



# BONAPARTE 400

ElasticDocs™ Evergreen Series

70 Years of Bonaparte Well  
Exploration History Available to  
Evaluate and Understand Prospectivity



## INTRODUCTION

The Iraya Energies BONAPARTE 400 product is 70 years of knowledge and human experience associated with over 400 wells, contained in 270,000 pages of documents with 250,000 images, delivered in an instantly retrievable, analytic ready, online cloud tool.

We use leading-edge Machine Learning (ML) and Artificial Intelligence (AI) solutions to ingest, store, classify and analyse the entire corpus of data associated with the Bonaparte Basin well database.

Access to the BONAPARTE 400 product allows geoscientists to efficiently navigate in and investigate the complete range of available petrophysical, geophysical, geological and engineering data, which translates into significantly faster and more reliable economic decisions.

## BONAPARTE BASIN DATABASE

The BONAPARTE 400 data repository consists of reports from 440 wells from the oldest well, Spirit Hill-1, drilled in 1959 to the youngest well drilled, Barossa-6, drilled in 2017.

### ElasticDocs™ Factsheet

Type of document	Unstructured data
Pages	270,000
Images	254,000
Text	AI enabled search queries using Natural Language Processing (NLP)
Images classes	Tables, Thin sections, Stratigraphic Chart, Seismic, Cores, Images Logs, Figures, Maps
AI/ML	Supervised, Unsupervised

BONAPARTE 400 processed unstructured data and processing overview available for ElasticDocs interrogation

### BONAPARTE 400 Factsheet

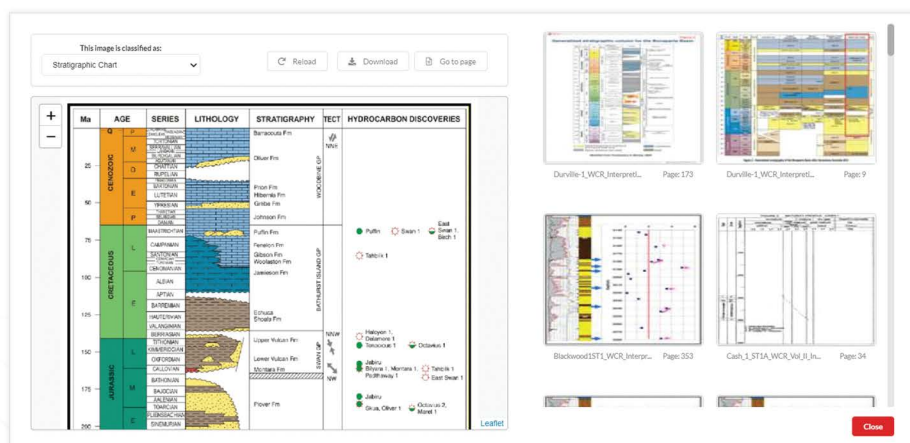
Wells	440
Oldest Well	Spirit Hill-1 (1959)
Youngest Well	Barossa-6 (2017)
Geological Formations	25
Lithology Units	10
Exploration History	70 years

Well repository searchable in ElasticDocs™

Data formats include pdf, doc and ppt. The data corpus makes up 270,000 pages, which include nearly 254,000 images, that have all been ingested and tagged automatically using ML/AI technologies. The images include tables, thin sections, maps, stratigraphic charts, seismic, cores etc.

### Stratigraphical Columns

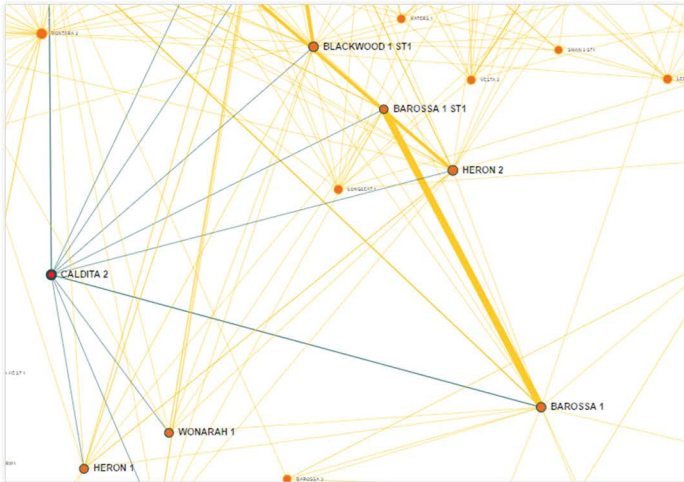
ElasticDocs™ view of the automated stratigraphic sequence overview from BONAPARTE 400.



## IMPROVE YOUR EXPLORATION AND DEVELOPMENT EFFORTS

Utilizing ElasticDocs™- BONAPARTE 400 makes it easy to compile information for an overview of the Bonaparte Basin using geodensity maps, investigate regional trends of lithology, fluids, pressure, temperature & minerals, and understand the drilling history using knowledge graphs. When the regional trends are understood an in-depth detailed study of selected areas can be performed.

### Knowledge Graph



ElasticDocs™ visualization feature using a knowledge graph to show how wells are linked based in information passing between the wells providing an instant overview of exploration history and key wells from BONAPARTE 400

## BLEND IN YOUR OWN PROPRIETARY DATA

You may have your own proprietary unstructured database for the Bonaparte Basin and surrounding basins available, which you would like to include in your search & retrieval of information and analysis.

Provide a data-dump (no need to organize the data) and Iraya Energies will ingest the data and include your data as a proprietary version for you of the Bonaparte Basin ElasticDocs™ application.

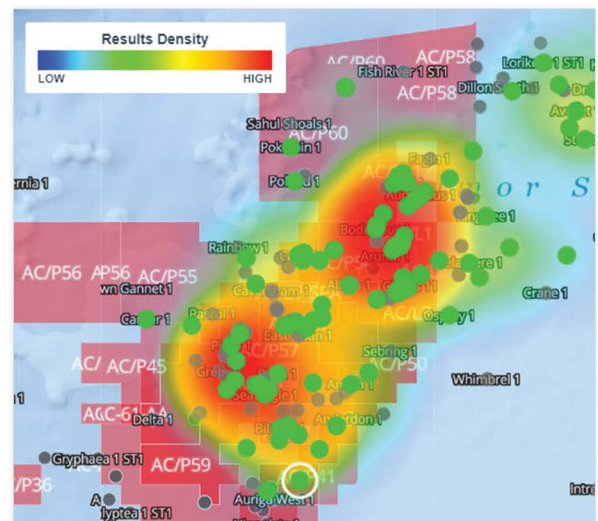
## TO LICENSE BONAPARTE 400

Please contact Enas (er@irayaenergies.com) if you would like to know more about BONAPARTE 400 or ElasticDocs™.

## KEEPING THE BONAPARTE BASIN DATABASE EVERGREEN

As new wells and other data become available, they will be ingested and incorporated into the BONAPARTE 400 deliverable to keep the product up to date.

### Geodensity Map



ElasticDocs™ geodensity map representing the distribution of oil producing wells from BONAPARTE 400